

Fun/STEM/HE

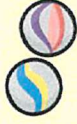
Activity

One



## Building Challenge!

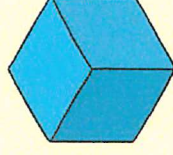
Use your building bricks and baseplate to build a marble maze!



twinkl.co.uk

## Building Challenge!

Use your building bricks to make a cube.



twinkl.co.uk

## Building Challenge!

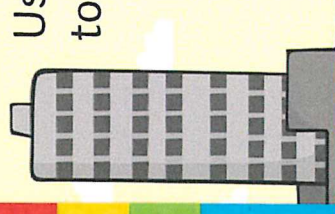
Use your building bricks to make your favourite animal.



twinkl.co.uk

## Building Challenge!

Use your building bricks to build a skyscraper.



twinkl.co.uk

## Make a permanent rainbow

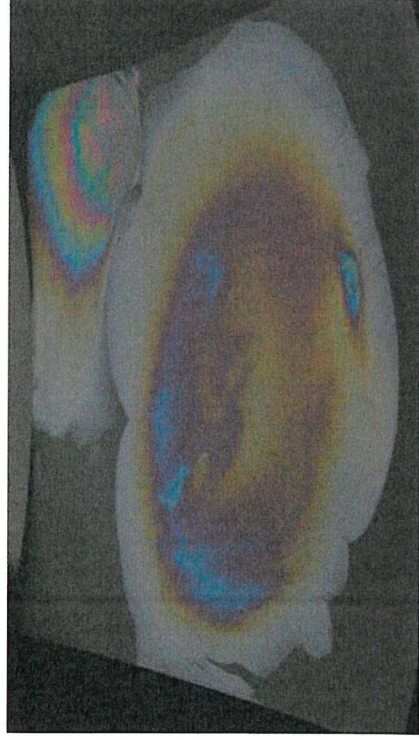
**Black paper**

**Water**

**Dish**

**Clear nail varnish**

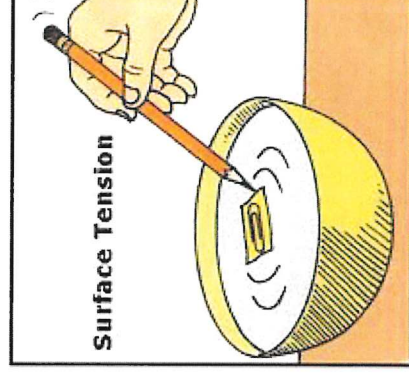
- 1) Put water in a small dish and place the black paper in until it is submerged in at least an inch of water.
- 2) Add a single drop of nail varnish
- 3) Slowly lift paper from the water and voila a permanent rainbow



## Floating paperclip

- bowl of water
- paper towels
- paper clips

- 1) drop a paperclip in the water and watch it sink
- 2) now add a small piece of paper towel ( a little bigger than the paperclip)
- 3) add the paperclip to the paper towel ( it should float whilst the paper sinks)



# Activity 1



## BUILD YOUR OWN CASTLE

**Great for: an extended holiday project for children or the whole family. You can each take responsibility for different sections of the castle.**

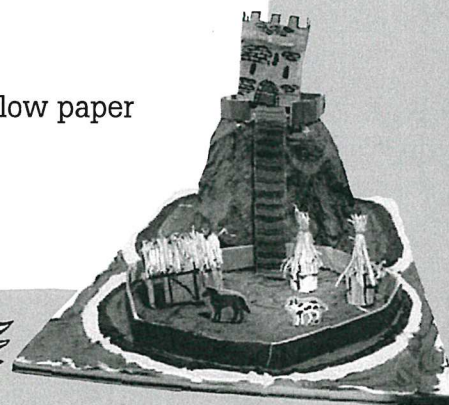
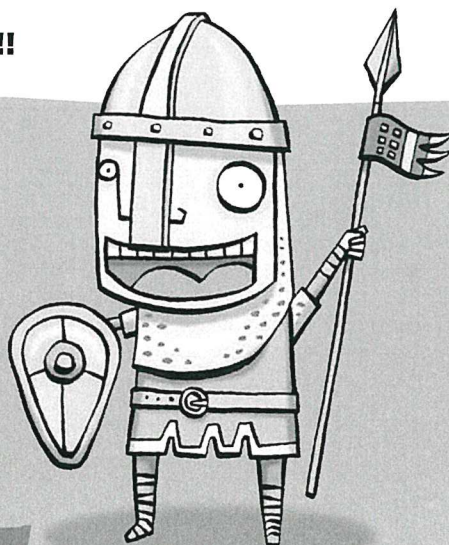
If you have a garden you may want to build your castle outside (it can get a bit messy!) or you could build a Norman sand-castle in a sand-pit or on the beach.

Use the illustrations provided as a guide for building your castle.

### You will need:

- A large sheet of cardboard (or a box folded out)
- A range of cardboard packaging boxes and sheets
- Toilet rolls
- PVA glue and/or sticky tape
- Paints and/or pens to decorate
- Straw (available from most pet shops) or yellow paper
- Tissue paper (optional)

### Get building!!



[bbc.co.uk/history](http://bbc.co.uk/history)

BBC  
HANDS ON  
HISTORY  
THE NORMANS

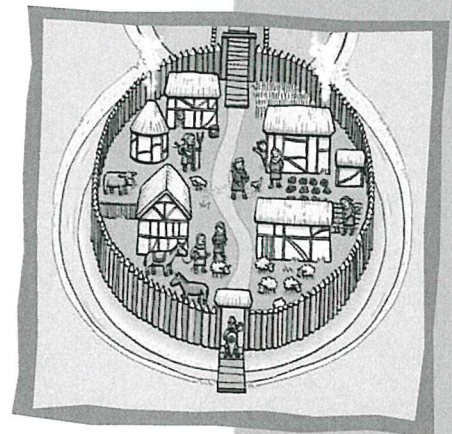
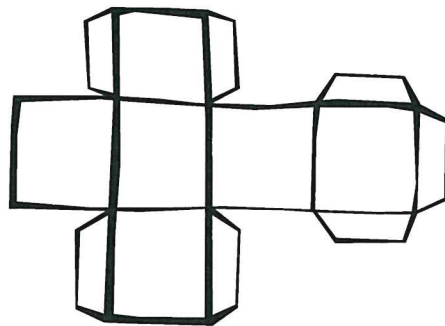
# Activity 1

BUILD YOUR OWN CASTLE

## The Bailey (Castle compound)

- Create houses out of old packaging boxes or cardboard using our box template. **See diagram.**
- Paint the houses brown to look like wood, or copy the 'wattle and daub' design on the castle illustration. Add windows and a door to each one.
- Create thatched roofs by building up a pointed roof using straw, or create a straw look by cutting fringing carefully into yellow paper.
- Build grain stores by cutting toilet rolls in half and adding 'straw' roofs.
- You may want to add farm animals too, using modelling clay, card or toys.
- Link your keep and bailey by a walkway, either by painting a path onto the motte in brown, or by adding a ramp made out of a strip of card.
- Add a palisade defensive wall around the bailey - to match the wall around your keep - by cutting a long strip of card (or several stuck together) and painting to look like a wooden fence.
- Use sticky tape to attach the wall to the platform, remembering to leave entrances where required.

For added defence, you can also paint a moat in blue around your entire castle and add a drawbridge painted brown.



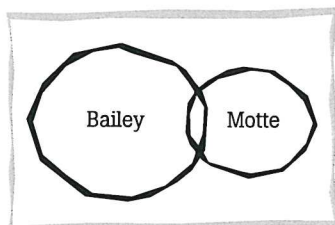
**You've built a motte and bailey castle.**

# Activity 1

BUILD YOUR OWN CASTLE

## Castle platform

- First find a large piece of cardboard to use as a platform to build on.
- Sketch a figure of eight onto it to create the shape for your motte and your bailey (don't worry about it being a bit messy, you'll paint over this later).



## The Motte (Mound)

- Find a small square box to start off your mound.
- Stick the box on the motte end of your platform using sticky tape or glue.
- Screw up old newspaper into balls. Use them to build up the sides of your mound around the box using glue or sticky tape. Make sure it's wider at the bottom and narrower towards the top.
- Once you're happy with the shape of your mound, stick a layer of ripped-up newspaper or tissue paper on it to create a smooth surface – don't worry if there are some lumps and bumps underneath, it's made from 'earth' after all!
- Paint the mound green to make it look as if it is covered in grass. Paint the circular bailey end of the platform at this point too. You can add a layer of tissue paper first to create texture.
- Leave to dry.

BBC

HANDS ON  
HISTORY  
THE NORMANS

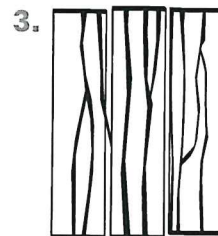
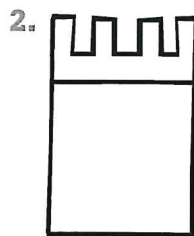
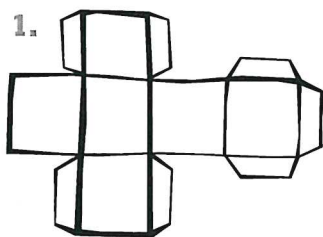
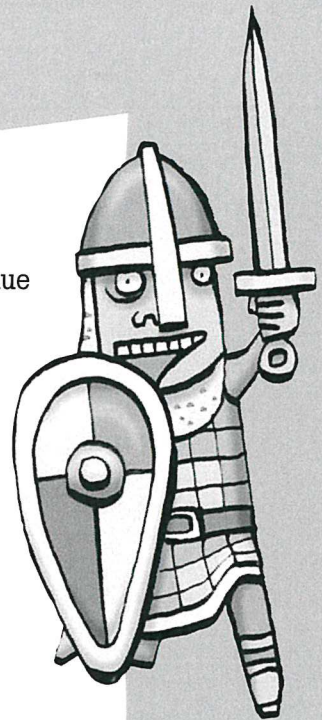
[bbc.co.uk/history](http://bbc.co.uk/history)

# Activity 1

BUILD YOUR OWN CASTLE

## The Keep

- Find a square or rectangular box, small enough to sit on the top of your motte, or make a box with card using a dab of glue on each tab. **See diagram 1.**
- Add some 'crenellation' detail to the top of your box – this means the square-shaped decorations you can see at the top of castles even today. Cut crenellations into strips of card, long enough to go around the top of the four sides of your box and attach with glue. **See diagram 2.**
- Paint the whole keep grey, adding some stone details in black.
- Add narrow windows on each wall and an arched front doorway in black.
- Place your keep on top of the motte and stick in place.
- Add a defensive wall around your keep using a strip of card painted to look as if it is made from strong wooden planks. **See diagram 3.** Bend the wall around the keep and attach to the mound with sticky tape.



[bbc.co.uk/history](http://bbc.co.uk/history)



BBC  
HANDS ON  
HISTORY  
THE NORMANS

Use the internet to find out the following

# Carrickfergus Castle - Questions

1. Where is Carrickfergus Castle located?

---

2. Who built Carrickfergus Castle?

---

3. What else did John de Courcy build?

---

4. What was the name given to troops fighting under William III?

---

5. How was the castle used during the late 1700s?

---

6. How was the castle used during the Second World War?

---

7. Name 3 features of Carrickfergus Castle.

---

---

---

8. What is the purpose of the 'keep' in a castle?

---

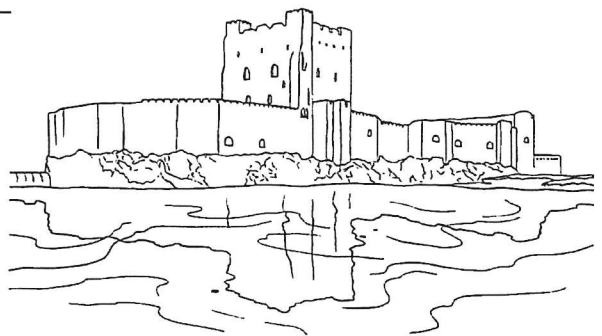
9. What is the purpose of the 'gatehouse' in a castle?

---

10. Name two events that can be held in the castle nowadays.

---

---





## **Week 1: Home Economics KS3 and KS4**

Please find below tasks some pupils may be able to complete or experience with support at home.

### **Daily Tasks**

*Please find below tasks some pupils may be able to complete or experience with support at home.*

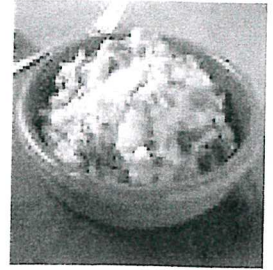
- Encourage pupils to set the table every night, assist or wash and dry dishes away in the correct places also.
- Encourage pupils to make their bed everyday if they can and tidy their rooms.
- Where possible as a family talk about what will be made for lunch and dinner every day. Make simple lunches and teas.
- Recycling: Encourage pupils to recycle items properly using the bins provided

### **Budgeting**

*Please find below tasks some pupils may be able to complete or experience with support at home.*

- Consider ways in which people can budget
- Discuss why people have to budget
- Pick some basic recipes eg: beans on toast, toasties, champ.
- Look up the ingredients needed for these recipes and see how much they cost.

## Champ



### **Ingredients:**

4 large or 6 medium potatoes  
2/3 scallions  
50g butter  
milk  
salt and pepper

### **Equipment:**

vegetable peeler  
vegetable knife  
saucepan  
brown chopping board  
colander  
potato masher

### **Method:**

1. Collect equipment and ingredients.
2. Put kettle on to boil.
3. Peel potatoes and cut into even sized pieces.
4. Put potatoes in saucepan and add boiling water.
5. When boiling, lower heat and simmer until potatoes are soft.
6. Wash scallions and chop into small pieces.
7. Drain potatoes in sieve and return to saucepan.
8. Add milk and butter and mash with potato masher until smooth.
9. Scallions.